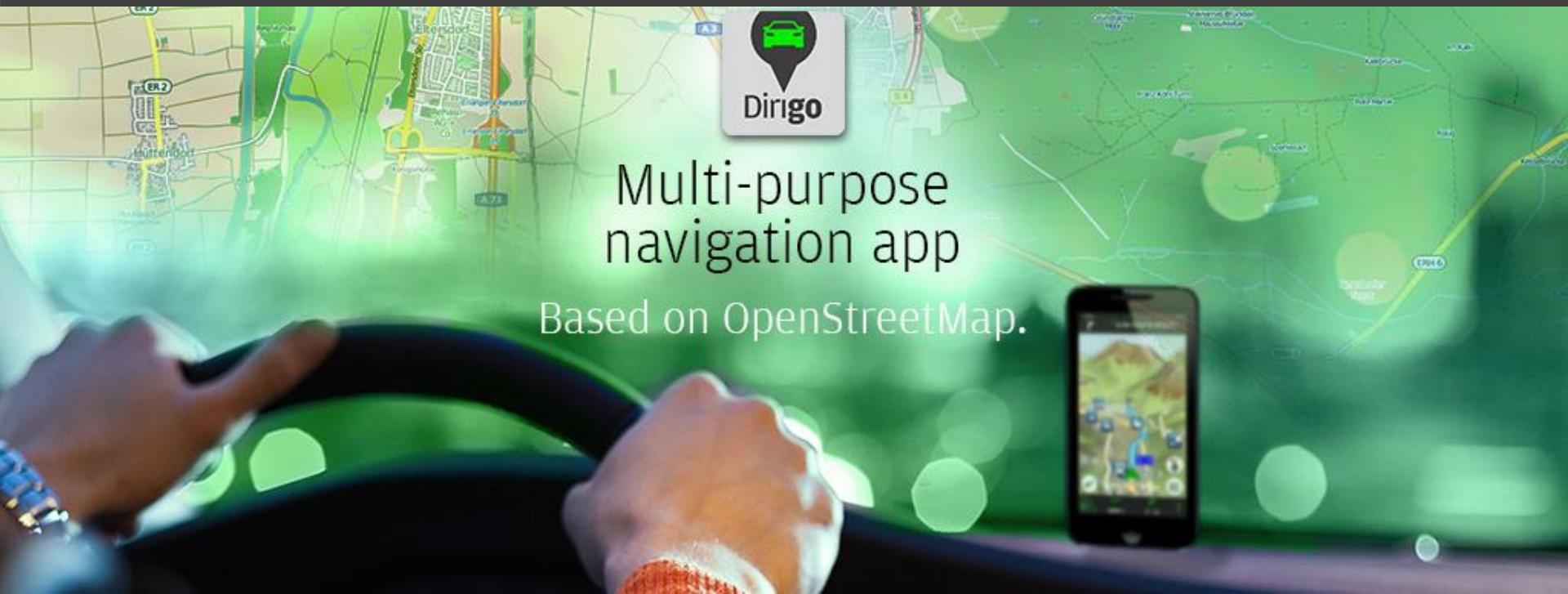


EB Dirigo – Map while you drive!



Elektrobit

Dr. Nicole Beringer, Thomas Barthel
16. September 2015





Agenda

Purpose of EB Dirigo!

EB Dirigo in a nutshell

Go and get EB Dirigo!





Purpose of EB Dirigo

Navi app based on OSM



Open Street Map for OEM navigation as alternative to expensive commercial maps

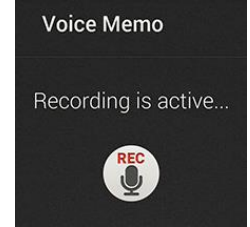
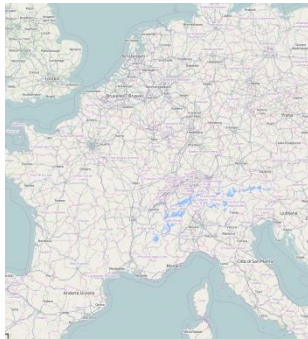


Help OSM community to improve OSM





In a nutshell: the app



Get the app

Download maps

Navigate based on OSM

- Run Traffic Sign Recognition while you drive
- Take landmark photos
- Record voice memos



Navigation based on OSM

The screenshot displays the Dirigo navigation application. On the left, a sidebar menu is visible with the following sections:

- + New Destination**: Includes an "Enter Address" field and a search icon.
- Enter City**: A search field with a magnifying glass icon.
- Recent Destinations**: A list of previously visited locations.
- POI**: A section for Points of Interest with icons for Restaurants, Fuel stations, and Hotels.
- > More categories**: A link to explore additional POI categories.

The main map area shows a 3D-rendered landscape with a blue route. Key locations and features include:

- Tiroler Straße (B171)**: The current road being navigated.
- A12**: A nearby highway.
- Telfs**: A town with a train station icon.
- Mösern**: A nearby town with a parking icon.
- Pollingberg**: A nearby town.
- Moos**: A nearby area.
- 3.5 km**: Distance to the next turn.
- 6.1 km**: Total distance to the destination.
- © OpenStreetMap contributors**: Attribution for the map data.

The bottom status bar shows a battery icon, a signal strength icon, the time **11:12**, and a menu icon.



In a nutshell: the webportal

www.ebdirigo.com



Back home:
Check your trips
See your collected items

Import collected data to OSM to
improve your community's maps



www.ebdirigo.com

Webportal overview



Dirigo Search user534791326 Show Elements English More

The screenshot displays the Dirigo webportal interface. At the top, there is a search bar, a Google Play logo, a user ID (user534791326), and navigation options for 'Show Elements', 'English', and 'More'. The main content is a map of the Erlangen-Fürth area, showing a red route with numerous circular markers containing numbers (e.g., 80, 70, 60, 50, 30). A prominent marker with the number '120' is located near Schnaittach. The map includes labels for various locations like Erlangen, Fürth, Nürnberg, and surrounding areas. A vertical toolbar on the right side of the map contains navigation icons (plus, minus, home, info, volume) and an 'OPEN IN ID' button. The bottom right corner of the map area includes the text '© OpenStreetMap contributors'.

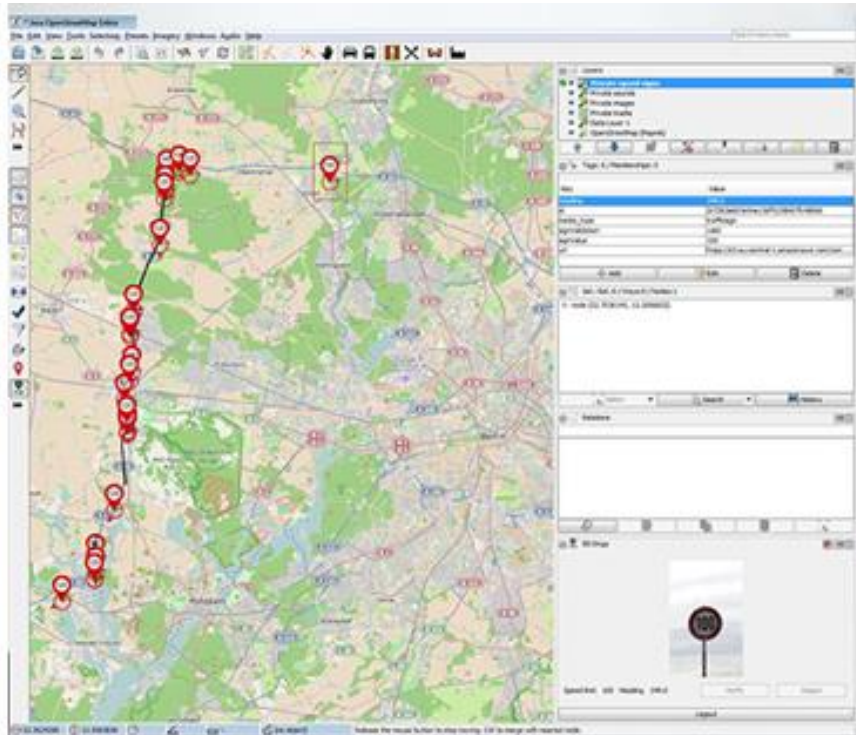


www.ebdirigo.com

JOSM or iD Editor



- Export your recorded route data from the web portal to OSM via JOSM
- Edit your data with the integrated iD editor





www.ebdirigo.com



Verifying recognitions

Java OpenStreetMap Editor

File Edit View Tools Selection Presets Imagery Windows Audio Help

Search menu items

Layers

- Private speed signs
- Private sounds
- Private images
- Private tracks
- Data Layer 1
- OpenStreetMap (Mapnik)

Tags: 6 / Memberships: 0

Key	Value
heading	349.0
id	2c7262eb03e94a13df5238b67c48666
media_type	traffic sign
signValidation	valid
signValue	100
url	https://s3.eu-central-1.amazonaws.com/com...

Buttons: Add, Edit, Delete

Selected: Sel.: Rel.:0 / Ways:0 / Nodes:1

node (52.7036145, 13.2006832)

Relations

EB Dirigo

Speed limit 100 Heading 349.0

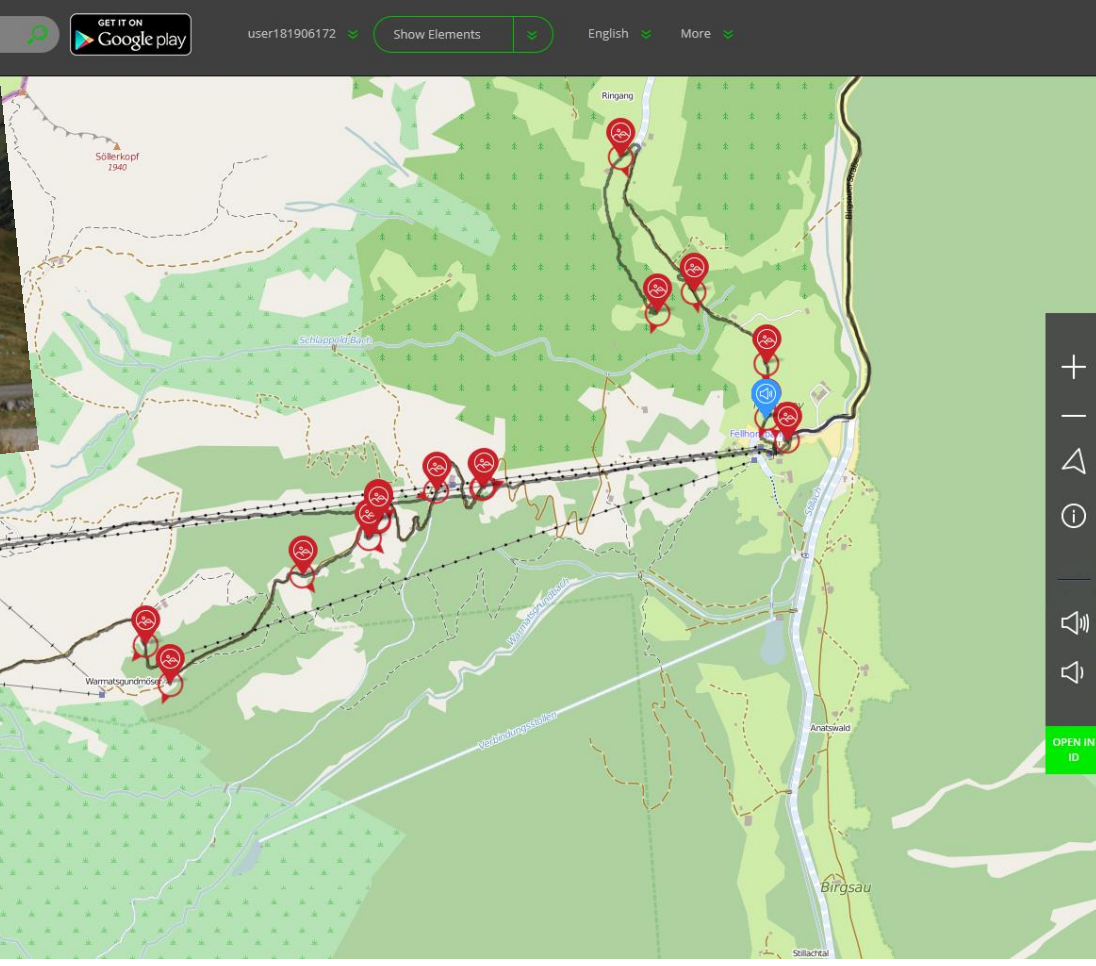
Buttons: Verify, Reject

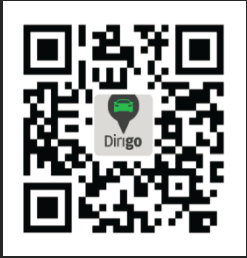
Logout

Status bar: 52.5624296 13.5583836 (no object) Release the mouse button to stop moving. Ctrl to merge with nearest node.



Hiking & biking tails available





Useful in many situations



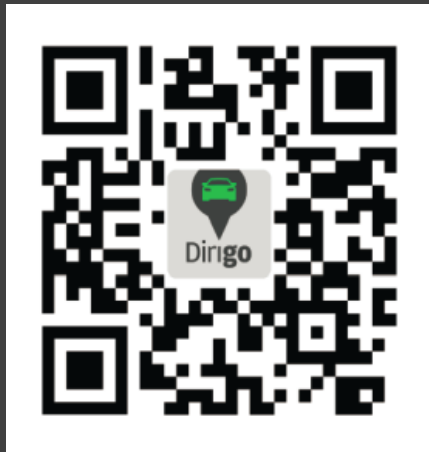
With EB Dirigo successfully to the town hall for the wedding

Thank you! Questions



Need help? Contact us:

help.ebdirigo@elektrobit.com



Interested in our new app? Scan it or
[Get it on Google play](#)

Visit our web portal: www.ebdirigo.com